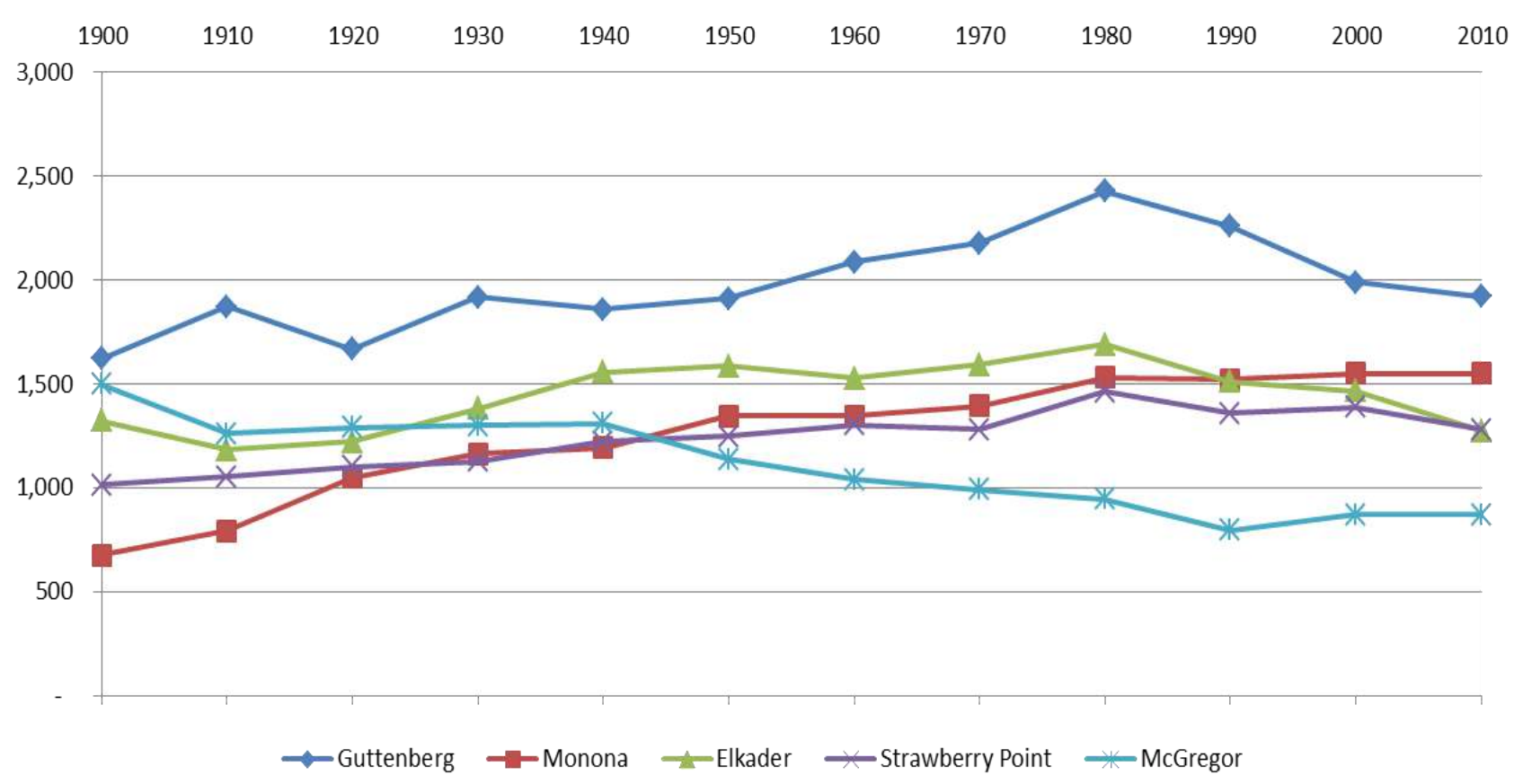


# What We Learned

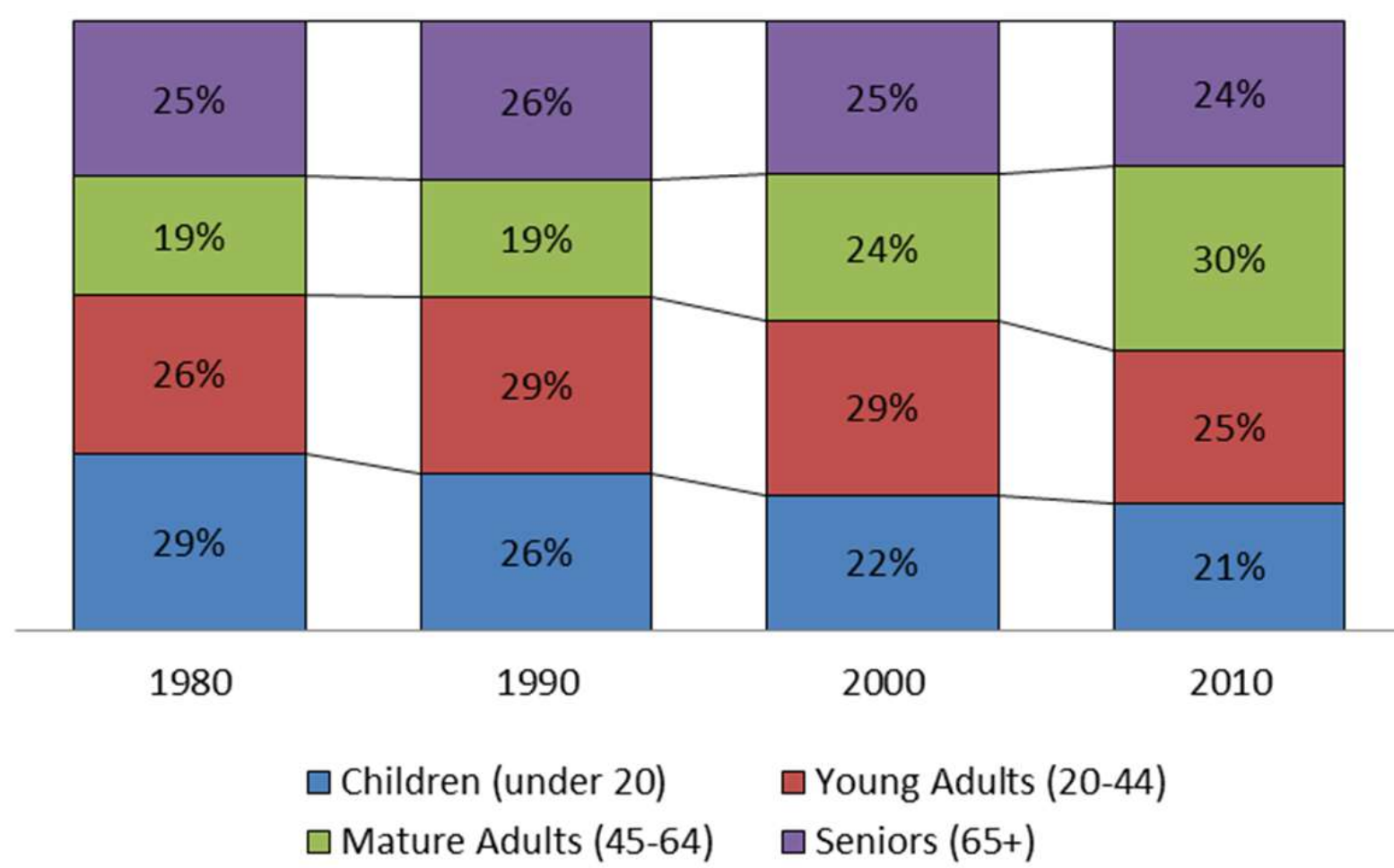


## From Data

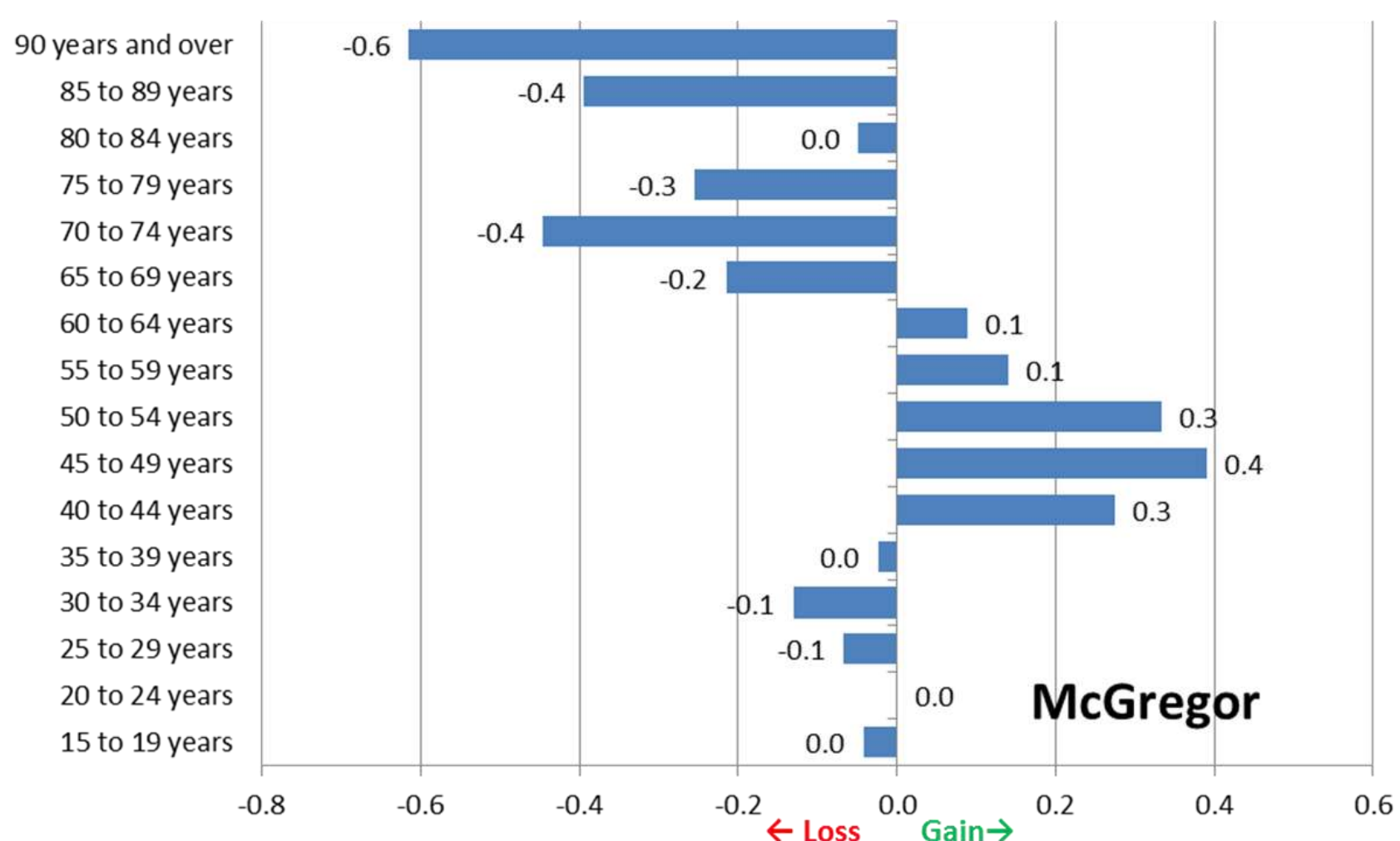
Population, Historical



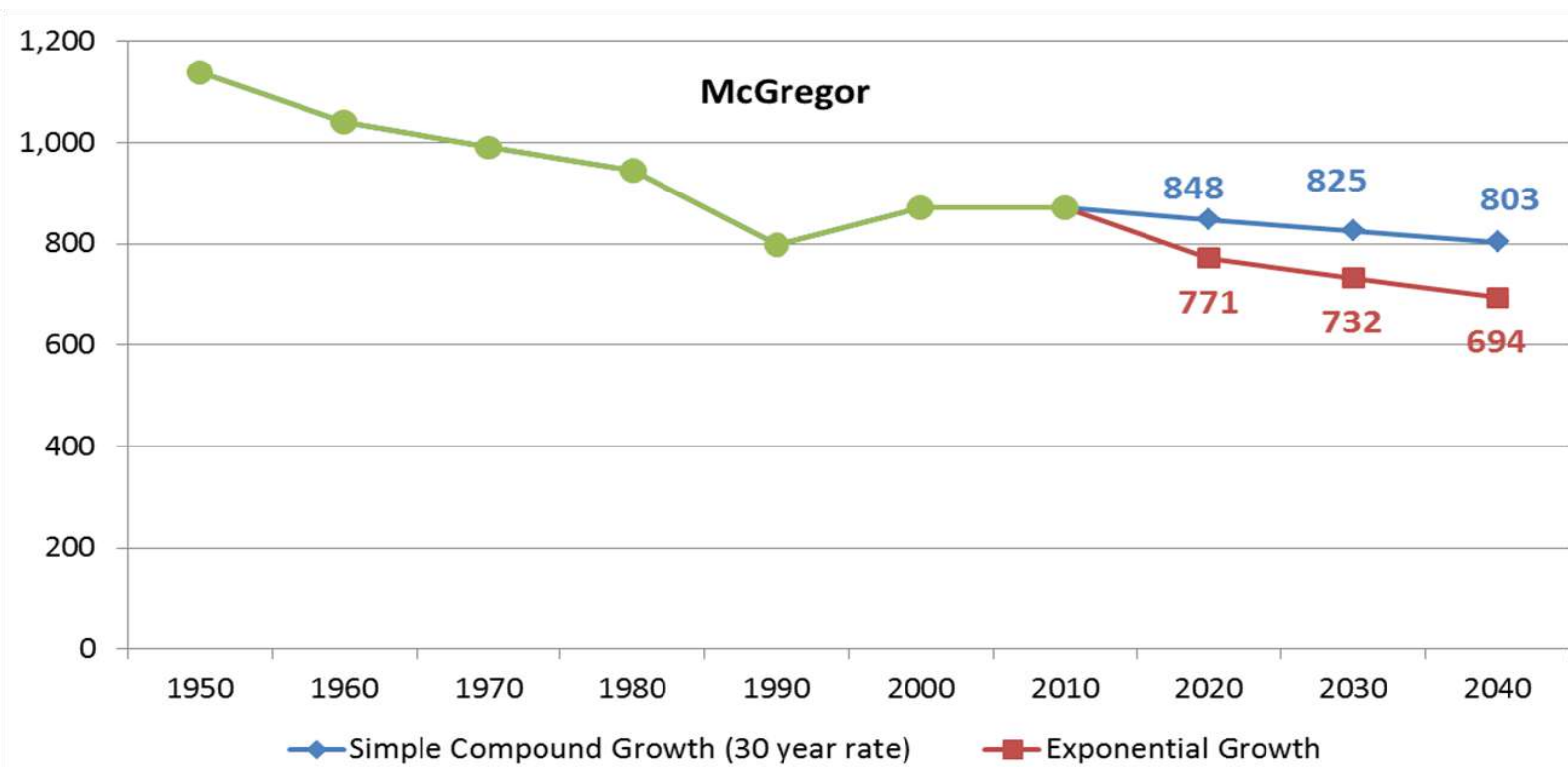
Age Group Distribution



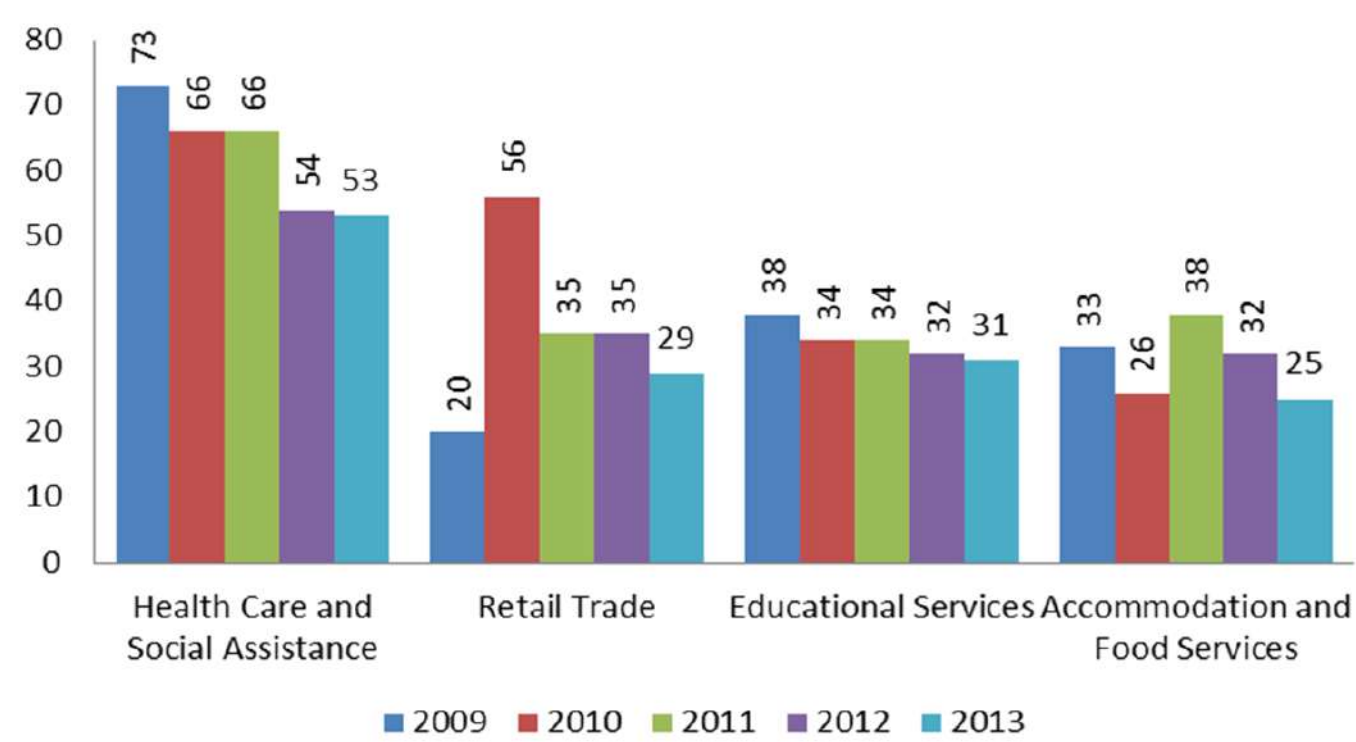
Net Population Loss/Gain by Age Group



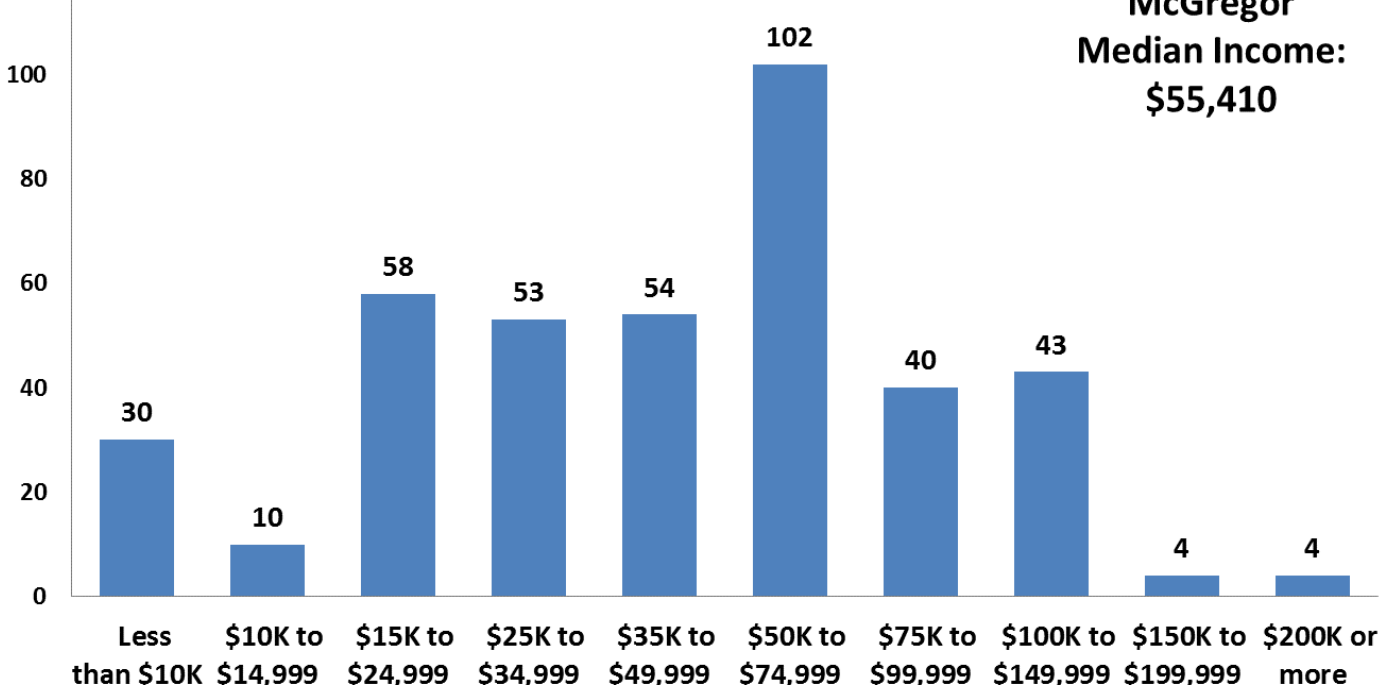
Population Projections



Top Four Employing Industries (Primary Jobs)



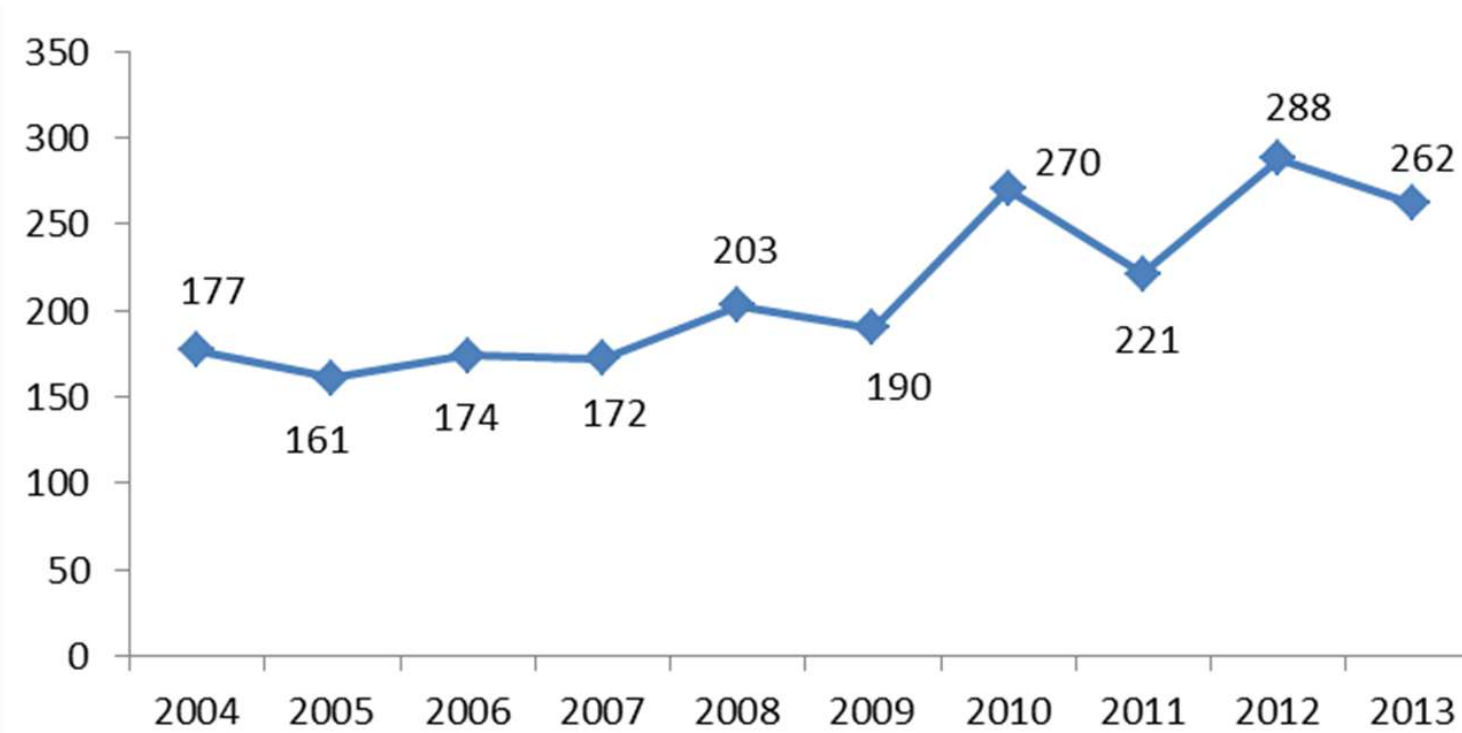
Household Income Distribution



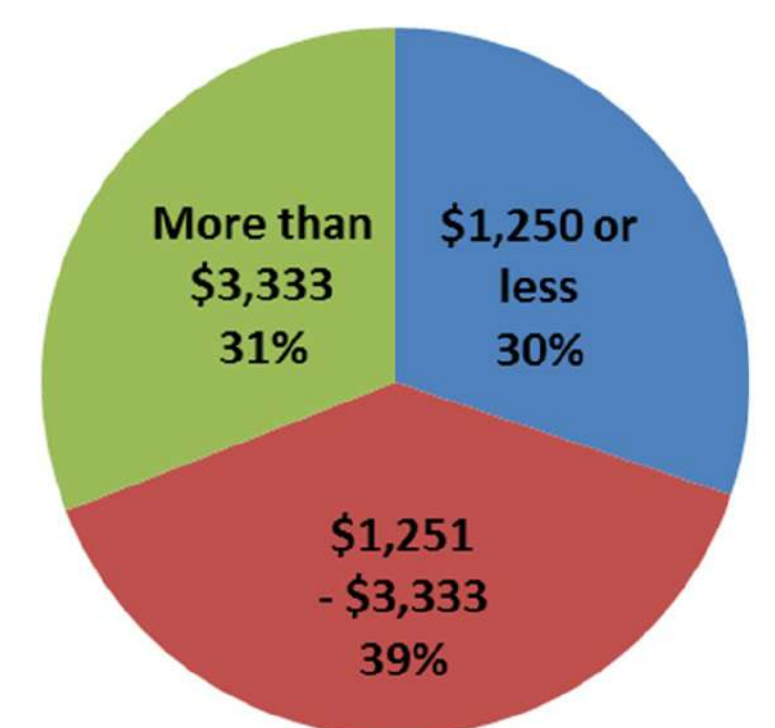
### McGREGOR

- ↑ Overall 8% population decline since 1980
- ↑ Well-distributed age grouping—the 45-64 year age group is the largest
- ↑ Newcomers in the 40-54 year age range
- ↑ Population projected to have a slight decrease
- ↑ Most jobs in Health Care
- ↑ Job counts over the past decade have fluctuated, with a low of 161 in 2005 to a high of 288 in 2012, for a 48% increase from 2004 to 2013
- ↑ Job counts went up 48% from 2004 to 2013
- ↑ Median household income = \$55,410, 14% more than the county as a whole
- ↑ 39% of jobs pay 15-40k; 31% pay more than 40k; and 30% pay less than 15k
- ↑ 244 people commute into the city for work, 327 leave for work, and 18 stay in the city for work

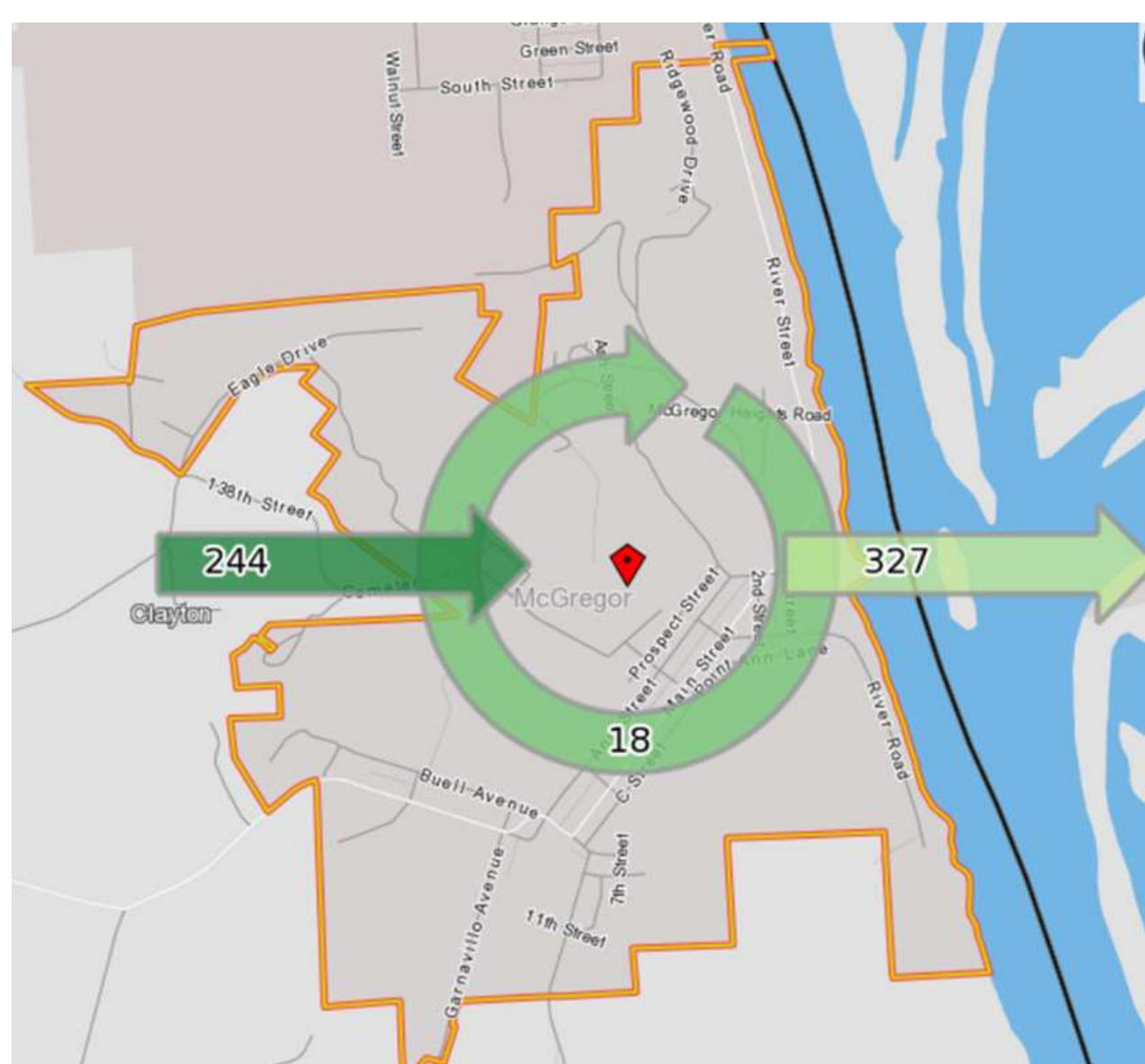
Job Count



Jobs by Earnings, 2013



Commuting (Primary Jobs, 2013)



Where are McGregor's workers going?

Prairie du Chien, WI	75	21.7%
Marquette	25	7.2%
Monona	24	7.0%
Stay in McGregor	18	5.2%
Elkader	15	4.3%
Dyersville	11	3.2%

Where are workers in McGregor coming from?

Prairie du Chien, WI	29	11.1%
McGregor	18	6.9%
Guttenberg	12	4.6%
Marquette	11	4.2%
Elkader	10	3.8%
Monona	9	3.4%